



**HEALY STATE PRIMARY SCHOOL
MURRIJUNDA**



**STUDENT
PROSPECTUS
2010**



Healy State School

MURRIJUNDA

5-9 Thompson Rd, Mt Isa, QLD, 4825.

Phone: 07 4743 5788 Fax: 07 4743 3397

Website: www.healyss.eq.edu.au

Principal: Mr Bryon Burke

Head of Curriculum: Ms Joanne Randl

"Freedom to Learn"



**Queensland
Government**

Education Queensland

OFFICE HOURS:	8:00am to 3:00pm (Monday to Friday)
SCHOOL STARTS:	8:30am
LUNCH:	10:30am to 11:15am
AFTERNOON TEA:	12:45pm to 1:15pm
SCHOOL FINISHES:	2:30pm

Please advise our office staff:

- * If you change your address
- * If you change your telephone number
- * If there is a change in your emergency contact number
- * If any significant changes occur with your child's health
- * If you feel we should know of any other changes which concern your child

SCHOOL CALENDAR 2010

Term 1 Commences	Wednesday 27 January
Easter	Friday 2 April to Monday 5 April
Easter Vacation Commences	Tuesday 6 April
Pupil Free Day	Monday 5 April
Term 2 Commences	Tuesday 6 April
Anzac Day	Saturday 25 April
Labour Day	Monday 3 May
Queens Birthday	Monday 7 June
Winter Vacation Commences	Monday 28 June
Pupil Free Day	Monday 12 July
Term 3 Commences	Tuesday 13 July
Spring Vacation Commences	Monday 20 September
Term 4 Commences	Monday 4 October
Pupil Free Day	Monday 18 October
Summer Vacation Commences	Monday 6 December



PRINCIPAL WELCOME

On behalf of everyone here at Healy State Primary School I would like to extend to you a warm welcome to the 2009 school year. We all look forward to meeting and working with you as we provide the best possible learning experiences to all our students.

Here at Healy we support the individual in dynamic classrooms, which are focused on literacy (in particular reading), numeracy and technology.

Our experienced, enthusiastic and professional staff, ensure that all students work towards their full potential. We offer exceptional intervention programs for those children experiencing difficulties in our focus areas. These include; Support-A-Reader, Support-A-Writer, Support-A-Maths Learner and Reading Freedom.

We would like to invite you all to be part of our school community. Feel free to join in at assembly, in parent-help programs in the classrooms, at Parents and Citizens Association meetings or in any other way that you feel comfortable.

Education is a partnership between home and school and we place a great deal of emphasis on our partnership with parents. We believe that children learn best when home and school work together for their benefit. When your child starts school, it is not where your job ends and ours begins. It is where our job begins and yours continues!

Children coming into school bring a wealth of knowledge and understanding about the world around them. It is our aim to build on these skills and promote a willingness and enthusiasm to learn more.

We all look forward to a busy and rewarding year as we work together for all our students.

Kristy Walton
PRINCIPAL

HEALY STATE SCHOOL IS...

A caring school where all children are happy and well motivated.

They will be challenged and achieve high standards through a fun and enriched curriculum.

A school where all members of the school community have equal access to learning

**opportunities and enjoy growing
and learning together.**



HEALY STATE SCHOOL'S VISION AND VALUES

Mission Statement

Healy State School's mission is to develop and enhance children's natural curiosity and openness through the benefit of a high quality education. We encourage children to build a sense of responsibility and respect for their community and the world around them. We strive to create a positive, supportive and safe environment where students will acquire the necessary skills to thrive in a diverse society as life-long learners. At Healy State School we meet individual and common needs by providing a creative and balanced curriculum.

Vision

Healy State School recognises the talents and abilities of all, and challenges children to define, appreciate and improve their individual potential and capacities.

Values

At Healy State School we value:

1. Caring and encouragement
2. Acceptance of others
3. Mutual respect
4. Effective communication
5. Acting responsibly
6. Integrity, sincerity and consistency
7. Effort and achievement



THE HISTORY OF OUR SCHOOL

Healy State School opened in January 1972, with an enrolment of approximately 270 students. The 21st Anniversary of the school's official opening was celebrated in September 1995.

The suburb of Healy was named after Kevin Healy, Under Secretary of the Department of Mines, and was developed to meet the ever-growing population of Mount Isa. Mount Isa experienced an expansion in housing growth between 1968 and 1972 and Mr Healy was very helpful to the City Council during this expansion. All streets in the suburbs are named after people who helped develop Mount Isa during this time.

Mount Isa, being a mining town, attracts families from all parts of our world. This has created a multicultural environment with many nationalities and cultures. This year we have many cultural backgrounds represented in our school population.

Healy State School was the last state primary school to be built in Mount Isa, and still features a modern architectural design. All classrooms are air-conditioned (soon to be refrigerative) and provide carpeted learning areas as well as wet areas for hands-on learning programs.

CURRICULUM

In Queensland, the curriculum is divided into eight Key Learning Areas (KLAs):



- **English** – speaking and listening, reading and viewing, writing and designing
- **Mathematics** – number, algebra, measurement, chance and data, space
- **Studies of Society and Environment (SOSE)** – time, continuity and change; place and space; culture and identity; political and economic systems
- **Science** – science as a human endeavour, earth and beyond, energy and change, life and living, natural and processed materials
- **Technology** – technology as a human endeavour, information, materials and systems
- **The Arts** – dance, drama, media, music, visual art
- **Health and Physical Education (HPE)** – health, physical activity, personal development
- **LOTE** – languages other than English (**Japanese**)
- In addition, Information and Communication Technologies (**ICTs**) are delivered as a cross-curricular priority.

At Healy State School we use integrated units to deliver engaging learning experiences from Year 1 to Year 7. Teachers work in teams designing programs to develop learners who can work independently and in teams to achieve goals and apply their knowledge in new ways. We value our links with other primary schools and high schools in our district and maintain our involvement in a range of activities that foster this association.

The strands of music (The Arts) and physical activity (HPE) are taught and assessed by specialist teachers. Our LOTE program is also run by our specialist Japanese teacher. All other KLAs and strands are taught by the class teachers.

Students at Healy also have access to specialist instrumental music teachers if they elect to train in this area. Our string program is open to years 3-7 students, and our woodwind program is open to years 5-7 students.

Early Phase of Learning

The prep program is designed to cater for each child's interests and needs and to foster the development of certain abilities, attitudes and skills that will assist the child's educational development.

The curriculum is based on active learning, which includes real-life situations, investigation and play. It recognises the importance of children's brain development through learning using all 5 senses, and the role of adults in facilitating, scaffolding and monitoring learning.

Evaluations have shown that using the curriculum in early childhood education provides a solid base for developing children's social skills, motor skills, and literacy and numeracy skills.

SMART MOVES

Smart Moves is a state-wide initiative that aims to increase student participation in physical activity and to improve the quality of that activity. It is widely recognised that physical activity is essential for good health and wellbeing, enhances students' educational outcomes, supports their personal development and promotes lifelong active lifestyles. <http://education.qld.gov.au/schools/healthy/physical-activity-programs.html>

At Healy State School, staff engage children in a wide range of sports or games that not only promote health and fitness but also team building, cooperation, and sportsmanship.

In addition, our principal runs a Perceptual Motor Program (PMP) for students in Prep to Year 3. The students rotate through activities designed to improve their perceptual awareness through motor skills. Teacher Aides and Year 7 student helpers are encouraged to help supervise small groups. Activities include body awareness, eye/hand, eye/foot co-ordination, balance and ball skills.

ABSENCES

It is important that all children attend regularly and also that they arrive on time. However, in the case of illness children may not be able to work to a satisfactory standard, and may also pose a health risk to other students. Under these circumstances we understand that children will stay at home. **We do request that a note or phone call is forwarded to the school following the absence explaining that the child was indeed absent due to illness and was in your care.** This is to monitor and prevent truancy. Should unexplained absences total more than 2 days a letter will be sent home requesting explanation.

ADOPT-A-COP

The Adopt a Cop programme was implemented in 1985 as a means of building a better relationship between the police and children in the school community. The programme is designed to permit the volunteer police officer to work with his/her local school in fostering a better relationship between the Police Service and students.



The programme has been rejuvenated to provide training and resources to enable the Officer in Charge of a police division to be

aware of the involvement of police officers in the education of students who attend schools within their police division. The rejuvenated programme will seek to encourage and develop improved behaviour and more responsible attitudes of children towards the community in which they live.

This programme is not to be confused with the School Based Policing Programme, which involves police participation, full time, in schools.

Aim:

"TO BE THE FOCAL POINT FOR THE POLICE SERVICE IN THE EDUCATION OF STUDENTS IN THE PRIMARY SCHOOL COMMUNITY"

Objectives:

- Reduce crime through education.
- Improve the attitude of students to the community, police and the law.
- Demonstrate the values, responsibilities and obligations current society deems valuable.

ACCIDENTS

In case of a serious accident the parents will be contacted in the first instance. If parents cannot be contacted an Ambulance may be

called. Any treatment provided will be at parent's expense.

ANIMALS

Family pets - particularly dogs - are not permitted in school grounds, except under certain circumstances (e.g. show and tell). If animals stray onto the school grounds the office will attempt to contact owners. Failing this, the pound will be contacted.



ARTS COUNCIL

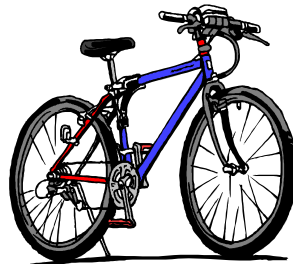
Arts Council productions are attended by all classes, including prep. Visits occur approximately once per semester.

APPROPRIATE USE OF MOBILE PHONE AND ELECTRICAL EQUIPMENT

Electronic devices such as mobile phones and MP3 players are not to be used during school time. In-phone cameras are not to be used anywhere or in any way a normal camera would be considered inappropriate. Mobile phones may be used before entering the school grounds and upon leaving the school grounds in the afternoon.

BICYCLES

All students who ride a bike to school must wear a helmet. Parents should ensure that children are aware of bicycle riding safety rules. The riding of bicycles is not permitted in the school grounds. It is highly recommended that students secure their bike to the provided racks to prevent theft during school hours. The bicycle area is out of bounds during school hours.



BOOKCLUB

At regular intervals, children may order books through Scholastic Book Club, which operates through the school. Participation is optional, and it is not necessary for a child to order every time. Payments are required to accompany orders and are to be returned in a named envelope.



BOOKFAIR

Throughout the year the Library holds Book fairs. This is where a selection of books are displayed at the library and the children can purchase the books of their choice. Purchasing the books is optional.

BOOKLISTS

Class book lists will be forwarded home before the end of each school year. Book requirements may change from year level to year level to support the planned learning program for each class. It is our aim as a staff to keep book requirements to a minimum cost. Required books and stationery can be purchased through local retail suppliers.

CAMPS

School camps may be held for students in Year 6 and 7. The venue and dates for each camp will be determined at the beginning of the school year. Student attendance at camp is subject to suitable behaviour at school.



CROSSING SUPERVISORS

Crossing Supervisors are posted on the McNamara Street and Thompson Road crossings. All pedestrians and bike riders must take advantage of these crossings. Crossing supervisors are a part of the school staff and should be treated with respect and courtesy at all times.

COMPLAINTS MANAGEMENT

During the course of your children's school years, you may have cause to make a complaint about an issue with your child's education. Education Queensland is committed to ensuring that all complaints are dealt with in a fair and equitable manner. There are processes and support structures in place to enable parents/carers and students to work through any issues they may have with Education Queensland provisions. When making a complaint, it is in the best interest of complaint resolution to ensure that you:

- provide complete and factual information in a timely manner
- deliver your complaint in a non-threatening and non-abusive manner and
- not make frivolous or vexatious complaints or include deliberately false or misleading information.

The following 5-step procedure may assist parents/carers, and school staff to reach an outcome that is in the best interests of the student.

- 1. Discuss your complaint with the class teacher**
- 2. Discuss your complaint with the principal or ask the principal to assist by participating in informal conflict resolution**
- 3. Contact District Office**

4. Complaint still not resolved

5. Independent review

COMPUTERS

Healy has a fully equipped ICT/Multi Media room that is accessible to all classes. In addition computers and internet access is available in each classroom as part of the school's focus on computer skills.

CONSENT TO USE COPYRIGHT MATERIAL, IMAGE, RECORDING OR NAME

Images of students participating in school functions/events, may be used for school promotions (including newsletter and newspaper articles). Materials used in all formats and media, as representations, reproductions or adaptations either complete or in part, alone or in conjunction with any wording or drawing, for all uses including Education Queensland advertising and commercial purposes without need for further consent or permission from caregivers.

DENTAL CLINIC

The Government operates a free dental service for all children in State Schools. We have a Dental Clinic on the school grounds and it operates through part of the school year. Notices are sent home with children to inform parents when dental checks will be performed. The telephone number for the Dental Clinic is 4743 5526.

DISTRICT SPORT

The Mount Isa School Sports Association (MISSA) is committed to providing students in the Mount Isa region opportunities to engage in organised school sport. Sport plays a vital role in young people's physical, social and emotional development. Participation in school sport enables our students' to experience competition, social interaction, enjoyment and development of personal fitness.

Goals of MISSA include:

- To facilitate maximum participation of students in school sport.
- To promote and develop school sport in the Mount Isa region.
- To provide leadership for school sport within the region.
- To coordinate the efforts of schools within the region.
- To improve the opportunities of students to participate in higher levels of competition.

The attainment of these goals is facilitated by the following factors:

- The association consists of dedicated teaching staff & principals.
- Professional development opportunities to provide individuals with the skills of sport coaching are extended to all teaching staff.
- A multitude of sports including: athletics, cricket, netball, rugby league, soccer, softball, swimming, tennis and touch football are on offer to our students.
- The association members meet on a regular basis to ensure that the effective running of the school sport program occurs throughout the school year.
- Students within the region have the opportunity to compete at local, regional, state and national competition.

DISEASES

Children with certain contagious diseases are, according to Regulations, to be excluded from school. For Regulations pertaining to common diseases listed below, contact the school Principal as required.

Diarrhoea
Hand, Foot and Mouth Disease
Hemophilus Influenza type b
Hepatitis A
Influenza
Meningitis
Meningococcal Infection
Pediculosis
Typhoid Fever
Whooping Cough
Chicken Pox
Measles
Rubella (German Measles)
Mumps
Impetigo (School Sores)
Ringworm
Scabies
Conjunctivitis (acute infection)

ELECTRONIC DEVICES

Electronic devices such as mobile phones and MP3 players are not to be used during school time. In-phone cameras are not to be used anywhere or in any way a normal camera would be considered inappropriate. Mobile phones may be used before entering the school grounds and upon leaving the school grounds in the afternoon.

ENROLMENTS

Enrolments for each new year begin in fourth term in the year preceding the new school year, and up to the start of school. Children will be enrolled in Prep **only if they have proof of**

age. A child must have turned five **by 30 June in the year in which they are starting Prep.**

EXTRA-CURRICULAR ACTIVITIES/ EXCURSIONS

From time to time educational tours are organised by teachers to reinforce the work being undertaken at school. For these tours children are expected to meet the cost of transport and admission fees where applicable.

FIRE DRILL

Fire drills are conducted regularly to familiarise pupils with procedures to be followed. The alarm consists of two different sirens. Officers from the fire brigade often attend to ensure emergency procedures are correctly carried out. If parents are in the school during a fire alarm they are requested to move to the school oval at the end closest to the cricket nets. When the all clear is given the bell will stop ringing.

FIRST AID

Trained staff are on hand to administer basic first aid when necessary, however injuries sustained at home should be treated before coming to school. If your child's illness or injury needs to be monitored throughout the day, please forward a note to classroom teacher.

GUIDANCE SERVICES

A variety of services are provided by Education Queensland to enrich children's learning experience at school. An Educational Guidance Officer and a Speech / Language Pathologist visit the school on a regular basis. If you feel your child requires access to these services please contact the principal and make an appointment to discuss the matter.

HOMEWORK POLICY

During 2005 Healy State School trialled a '**No Homework Policy**'. The trial was very successful and with the support of the school P&C Association a 'No Homework Policy' has been implemented in full from 2007. Below are a number of positive and negative discussions points that assisted in reaching this decision.



Positives identified in maintaining homework:

- It was discussed that homework provided another avenue for students to revise class work that was carried out during the day

- It was also suggested that homework better prepares students for secondary education
- Finally and probably the most effective argument for homework is that it informs parents of class work being covered. Some parents stated that homework allowed them to keep in touch with what their children were doing at school



Negatives identified in maintaining homework:

- A large proportion of teacher time is taken up carrying out consequences to children who failed to complete homework and creating the homework tasks
- The homework is too easy or too hard (varying experiences)
- Some parents support the current school homework policy, others ask for their children not to receive homework
- Conflict at home between parents and children
- Home time is family time and with the many pressures of both parents working this time is precious

With the above positive and negative points as a guide it was determined that to replace homework we needed to develop a term overview that would be sent to all parents over designated holiday periods. The term overview outlines what will be covered at school throughout the term and when particular assessment items are due. It also includes any special events that may be occurring throughout the term. This overview is flexible, but is meant to give parents a guide to what their child will be learning each term.

In addition to the term overview we have also developed a whole school reading log. It will be an expectation that every child attending Healy State School, as of 2006, will read for a minimum of five minutes a night and have a parent/guardian sign off on their reading. It is also important to note that year one and two will receive weekly homework and are excluded from the '**No Homework Policy**'. It was decided that basic homework in the early years is vital to long term student success.

INDUCTION

The school runs an induction program for children and parents who attend Prep at Healy and indicate interest in attending the primary school. Details of this program are available from the office at the start of Term 4 each year.

PREPARATORY AND YEAR 1

Children may be enrolled in Queensland Primary Schools if they reach the age of five years by the 30th June of the year in which they are attending Prep. To allow students to settle into school life as easily as possible it is helpful for children to know:

- their own names, parents' names, address and phone number
- their birthday and their age
- the year level of brothers and sisters
- the way to school by themselves.

It would help if children have clothing and school requisites marked clearly with their names and can recognise their names on such clothing and school requisites.

FIRST DAY OF SCHOOL

If children have been enrolled prior to the beginning of the school year, parents are encouraged to take them directly to their classroom where lists of children for the various classes will be displayed outside the appropriate classroom door. Even though it may be a busy time for all, take the time to introduce yourself to your child's teacher as you will be most welcome as part of the Healy school community. Leave your child with his/her teacher with as little fuss as possible as children usually settle down very quickly after their parents leave. It is an important day in children's lives and we want to make it as enjoyable as possible for everyone.



Requirement for the First Day

1. A school bag or case showing name and address, preferably also identified by a bright picture or sticker that is easily recognised by your child.
2. A broad brimmed hat or legionnaire hat should be worn and clearly named.
3. Shoes of the lace up variety or sandals should be worn every day. Thongs are definitely a hazard and are not acceptable.
4. A school uniform is the preferred clothing.
5. Children will need lunch for both breaks.



INSTRUMENTAL MUSIC PROGRAM

Two Instrumental Music teachers visit our school on a weekly basis. One teacher specialises in strings, while the other conducts wind/brass

instrument sessions. Children are withdrawn

from normal class lessons to attend these music sessions. It is the expectation that children participating in this program will work towards performing in a school ensemble. If you would like more information please contact the school. A cost is associated with participation in this program.

INTERVIEWS/REPORTS

Parent/teacher interviews are held in conjunction with report cards in Terms Two and Four. This is a progress report aimed at building links between home and school.

LEARNING SUPPORT/DIFFICULTIES TEACHER

Healy State School has a Learning Support Teacher who provides additional support for teachers as well as students who may be experiencing learning difficulty. If you feel your child may require learning support or they were receiving support at their last school please discuss the matter with the principal on enrolment. A referral is necessary before children are allocated time with the Learning Support Teacher. At Healy, the task of the learning support teacher is one of multi skilling, in a variety of different areas within education. Currently, the LST's mission revolves around creating, implementing and discussing with staff the following:



- **Jumpstart:** A gifted and talented program aimed at providing students and their parents with an IEP based upon their abilities and interests
- **Social Skilling:** These are folders that have been created to encourage teachers to guide students through important aspects of socialization, health and hygiene, safety and sense of self.
- **Support Plans:** This is a mandated task set out by Education Queensland to help those students with learning difficulties in core curriculum areas. These are created in conjunction with the LST and class teacher based upon goals, which come from the teachers planning. These areas of need are a focus for both teachers and students to work towards achieving through various learning strategies.
- **Literacy Room:** This room is a bright, safe and supportive room set out to cater for students working on support plans. It is used in conjunction with a specialist Teacher Aide and the LST to assist class teachers with the support plan implementation.

As with a Teacher, the LST's role is to assist teachers and students in many forms including learning difficulties, gifted and talented and planning.

LEARNING TECHNOLOGY

At Healy State School (Virtual Futures Centre of Excellence), technology is a valuable and important tool that greatly enhances the learning process. It is invaluable with assisting in modelling complex and abstract thinking processes, teaching problem solving and drilling on basic skills. It has proven to be an equaliser in the voice of the students; thereby enhancing the ability of special needs students need to communicate. It also improves skills in group interaction, teamwork and especially individual resourcefulness, but it is not a cure-all. Teachers are still the ones who facilitate/teach, the technology is a teaching tool. All teachers at Healy find that it works best to start slow and experiment with some small activities first. Teachers and students that work with technology daily will begin to seek out technologically related solutions to learning or educational situations.

LEAVING THE SCHOOL GROUNDS

Written parent approval is required for children to leave the school grounds during the First Break. Children are not allowed to leave the school grounds during the Second Break. Proformas for this approval are forwarded home on request. Children with parental approval are issued with a lunch pass. Any request for a child to leave school early on a regular or casual basis must be made in writing to the class teacher by the parent before the stated time.



LIBRARY

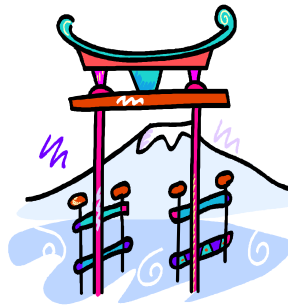
The school has a modern, well stocked library. Children are encouraged to use the library as often as possible. We ask for your assistance in ensuring that library books are returned to school on time and in good condition. Parents are welcome to visit the library to help select children's books.



Parent volunteers who work in the library from time to time are most welcome.

LOST PROPERTY

As a school we find children tend to misplace quite a lot of clothing and personal effects through out the year. Marking of property with your child's name increases the chance that it will be returned. A lost property box is maintained in the First Aid Room. Items of significant value will be held at the office. Unclaimed lost property is donated to charity at the end of each term.



LOTE

This year all students in Year 3, 4, 5, 6 and 7 will be learning Japanese. This will be taught by a specialist teacher for a period of 60 minutes (minimum) per week. The curriculum is largely

activity based accommodating individual students needs, interests, capacities and prior experiences. Topics covered are designed to challenge the children whilst promoting an appreciation of the diversity and richness of a multicultural society. Assessment of student progress is both formal and informal, focusing on skill development in each of the areas of speaking, listening, reading and writing. The emphasis in this key learning area is in encouraging enjoyment whilst studying Japanese, fostering risk taking and experimenting with the target language exposing students to a wide variety of "real" experiences through authentic and relevant resources. Parental involvement is strongly encouraged and appreciated.

MEDICATION

School staff can assist a student with medication provided that a written request is received from the student's parent or legal guardian. Staff must follow the directions on the original pharmacy label attached to the medication container. Please ensure that medication left at the school is not out of date and has an original pharmacy label with the students name, dosage and time to be taken. Please notify the school in writing when a change of dosage is required. This instruction must be accompanied by a letter from a medical practitioner. The school requires advice in writing of any potential side effects or adverse reactions associated with the



medication. Parents are asked to advise the school in writing and collect the medication when it is no longer required at school. Most procedures for the administration of medication and management of health conditions can be adequately addressed by universal guidelines. However, students with more complex requirements may require individual management plans. These plans should be reviewed annually, signed by a parent/caregiver and revised when medication and or health status changes. The plan must include the following:

- Telephone numbers for parent/caregivers, medical practitioner and ambulance
- Requirements – medication, dosage, when and how medication is administered
- Triggers, reactions, warning signs and symptoms of a possible emergency
- Instructions from a medical practitioner regarding emergency first aid treatment
- Limitations or guidelines for specific activities such as swimming, sport, outdoor education, camps and physical education



If you find the above information relates to your situation please contact the school to ensure safe administration of medication to your child.

MONEY AT SCHOOL

Children will often be required to bring money to school for various reasons. All money should be placed in an envelope and be clearly marked with the child's name, grade and the purpose for which the money is intended. It is recommended that all money be handed to the office or class teacher on arrival. The school excepts NO responsibility for any money lost, stolen or misplaced. Money for extra-curriculum Activities MUST be handed in before due date. All late money will NOT be accepted.



MUSIC

Healy shares a Music Teacher with several schools in the Mount Isa District. This teacher conducts weekly classroom lessons and assists teachers with their music programs. Two instrumental specialists conduct lessons with individual students



in Years Four to Seven who wish to learn orchestral instruments in order to join ensembles to represent the school.

NEWSLETTERS

Newsletters are sent home every second Monday with the eldest child in each family and are the main form of communication with parents. If you are not receiving a newsletter please check with your child in the first instance. Newsletters are available via e-mail. Should you wish to receive your newsletter in this manner please leave your details at the front office.

PARADE

Parade is conducted every Monday afternoon at 2:00pm under the covered area near the Tuck-shop. Parents are most welcome to attend parades.

P & C ASSOCIATION

The school P & C Association meets in the Staff Room once a month on a Monday evening from 7.00pm. The dates of meetings are published in the school newsletter and on the P&C notice board. The P & C works as a representative body to aid in decision making to improve educational outcomes for all children. They are also a major fundraising force within the school. All parents are welcome to attend meeting.

PARENT NOTICE FOR RELIGIOUS INSTRUCTION IN SCHOOL HOURS

An ecumenical program is conducted within the school. Some classes are given weekly lessons by various Ministers from local churches. All children take part in the program unless parents write a letter to the school asking for their child to be excluded from the program.

PARKING

Parents are requested to drop off and collect students from a designated area on Thompson Rd using the correct parking areas. Arrange with your children at home to be waiting at the crossing at a specific time to be collected. Students are to use the supervised crossings when going to an awaiting car that may be on the opposite side of the road. Driving of vehicles in any other part of the school is strictly forbidden without prior approval by the principal.

PHONE

Students are permitted to use the office telephone in emergencies. Clear



instructions regarding arrangements for transport home, or after school activities, must be made with children before coming to school. As this is a large school with a busy office it is sometimes inconvenient for office staff to deliver messages of this nature other than in emergencies. Use of the phone by students to request projects, homework or sporting equipment being brought to school if it is left at home is generally not permitted.

PHYSICAL EDUCATION

Healy has a full time Physical Education Teacher that is shared with Central State School. This teacher plans and implements a Physical Education program within the school. Other duties performed include: organisation of swimming and athletic carnivals and some school camps.



SCHOOL EXCURSIONS

As activities arise that require students to leave the grounds and travel on transport provided, parents will be advised by notice of the details including costs. Permission forms are sent home allowing withdrawal of permission should a parent wish to. Notification to the Principal is required if parents do not wish their child/children to participate in a particular event/activity.



SCHOOL HOUSES

Each child is allocated a house for sporting and other purposes. The houses are named after Lakes surrounding Mount Isa. House names and colours are listed as below.

JULIUS	Red
MOONDARRA	Blue
CORELLA	Green

For Athletics and Swimming Carnivals the children are encourage to come dressed in their house colours. The children are placed in the same house as their siblings.



SCHOOL PHOTOGRAPHS

Class photographs will be taken annually. Parent/Guardians will be notified and payment envelopes will be sent home closer to the date.

SCHOOL RULES

As a community we encourage respect for oneself and others to ensure a safe and supportive school environment;

Respect Yourself

- Dress appropriately (school uniform where possible).
- Be responsible for your belongings (hats and all school items, leave non-school items at home unless requested).
- Keep yourself healthy and safe (wash your hands before and after eating and going to the toilet).

Respect Others

- Be polite and considerate at all times (no fighting / teasing / bullying or swearing).
- Be on time and prepared for all lessons.
- Play sensibly in safe areas (unsafe areas are out of bounds).
- Respect other people's belongings.

Respect our School

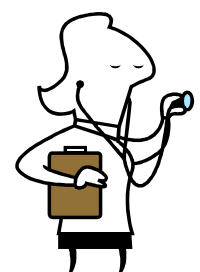
- Care for our gardens and native wildlife.
- Keep all areas tidy and clean (all rubbish in bins).
- Always represent the school with pride (at school and in the community).
- Care for school equipment (in classrooms and the playground).

SCHOOL WATCH

Many millions of dollars are lost each year carrying out repairs to schools that fall victim to vandalism. To help protect our school we encourage our school community to help keep a watchful eye on the school grounds and buildings outside of school hours, and particularly during the vacation periods. Please report any suspicious activity to the police or call 131788. You do not have to give your name, simply say you are part of Healy School Watch.

SICK CHILDREN

If your child is ill during the school day, they will be sent to the office and you will be contacted. Therefore it is recommended that you keep



your contact details which are held by the school, up to date. The school does not have the facilities to keep sick children at school, therefore it is requested that parents use appropriate judgement and consider the possible health effects to others when deciding whether to send children to school. School staff are not permitted to issue Panadol or other over the counter analgesics to children for minor ailments.

SPEECH LANGUAGE SERVICES

Speech and Language Pathology services at Healy State School are provided in accordance with the 'Mount Isa District Service Delivery Guidelines' and the 'Priorities in Speech-Language Therapy Service in State Schools' document. The service options that are available are then negotiated between the SLP and the educational team in accordance with the schools priorities and SLP time allocation

The following Speech-language Pathology service options will be available at Healy State School in 2009 following this negotiation and prioritisation:

- Assessment of students using both formal and informal assessment tools, and writing of assessment reports
- Individual therapy sessions with students with difficulties in a variety of areas including speech production, receptive and expressive language, and phonological awareness
- Group therapy programs focusing on speech, oral language, and phonological awareness skills
- Class-based programs focusing on oral language and phonological awareness skills. This includes the Mount Isa Speech-language Pathology Service Delivery project that will be implemented in preschool, grade 1 and grade 2 classrooms
- Facilitator programs for individuals and small groups provided and monitored by the Speech-language Pathologist and facilitated by parents or teacher aides
- Involvement in the verification process including information gathering, assessment, diagnosis, report writing, EAP meeting attendance, and IEP support
- Teacher consultation and collaborative planning regarding student referral, assessment, planning and programming
- Training and development for teachers and teacher aides about SLP services,

areas of communication and programming

- Resources and material development for use in the school with individual students, small groups and whole classes
- Liaison with other agencies such as the Royal Bush Children's Health Scheme, to assist school's with student support

The Speech-language Pathologist is looking forward to working with the educational team at Healy State School in 2008 to assist students achieve their educational outcomes.

SPORT

Sport is part of the school program and participation is encouraged. A variety of skills and sports are taught to children through the school Physical Education Program as they move through the years. From time to time children in Year 6 and 7 may compete in interschool sporting events. Participation will depend on children's ability to display appropriate behaviour.



STAFF

Healy School has a Principal and 10 teachers, including a Physical Education Teacher, a Learning Support Teacher, Music Teacher and a L.O.T.E. Teacher. We are assisted by two Administrative Officer, several Teacher Aides, a Janitor/grounds person and several Cleaners.

STUDENT DRESS CODE

Boys' uniform consists of a green and gold polo shirt with the school emblem in gold on the front together with green shorts. Girls' uniform options are green shorts or a green pleated skirt together with a green and gold polo shirt with the school emblem in gold on the front. Suitable footwear is to be worn at all times. Wide brim or legionnaire hats are to be worn at all time when outside of the classroom. Parents will be notified when the P & C are ordering uniforms during the year. Uniforms and hats can be purchased from the office. We strongly encourage students to wear their uniforms

- When attending or representing our school
- When travelling to and from school and
- Engaging in school activities out of school hours

Our Student dress code aims to provide clothing guidelines that aim to contribute to a

safe and supportive teaching and learning environment through

- Ready identification of students and non-students at school
- Fostering a sense of belonging
- Developing mutual respect among students by minimising visible evidence of economic or social differences.

Healy's dress code reflects our school community's standards and is consistent with Occupational Health and Safety and anti-discrimination legislation. Acceptable or reasonable dress refers to clothing or apparel that would be socially acceptable, although it might not conform to the school's student dress code. Inappropriate dress refers to clothing or apparel worn by students that is deemed to be:

- Offensive
- Likely to disrupt, or negatively influence normal school operation
- Unsafe for student or others; and
- Likely to result in a risk to health and safety of students or others

At Healy State School, we have the following explicit rules

- No jewellery except small studs or sleepers
- No thongs, we encourage the wearing of enclosed shoes
- No advertising/ logos of inappropriate subjects for example, alcohol

Healy State School can choose to impose sanctions to those students that do not comply with this dress code. These sanctions can include

- Prevention of students from attending, or participating in, any activity for which the student is representing the school; or
- Prevention of students from attending, or participating in, any school activity that is not an essential school educational program.

STUDENT USAGE OF INTERNET, INTRANET AND EXTRANET

INTERNET AND TECHNOLOGY POLICY

All students using the Information Technology at Healy State School will:

- Respect others' rights to freedom from harassment and intimidation;
- Use the Internet and local area networks for purposes that are legal and generally acceptable for public school students;
- Respect and adhere to the laws concerning copyright and other intellectual property rights;
- Follow security restrictions for all systems and information;
- Use and share computer resources courteously and efficiently;

- Respect the privacy and integrity of electronic documents.
- **Students will use computers only for educational purposes**
- Students will not look for anything that is illegal, dangerous or offensive.
- If students accidentally come across something that is illegal, dangerous or offensive, they will:

(a) **Clear any offensive pictures or information from the screen; and**

(b) Immediately and quietly inform the teacher.

- **They will not reveal home addresses or phone numbers – theirs or anyone else's.**
- Students will not use the Internet to annoy or offend anyone else.

Breach of the above will result in appropriate action being taken. This may include loss of Internet access for some time, through to suspension or exclusion for serious breaches.

SUN SAFE

All children must wear a hat, either wide brimmed or legionnaire style, when playing in the

school grounds. The use of sunscreen is also encouraged. The inclusion of children in outdoor activities may be dependent on the wearing of a hat. We support a "no hat, no play" policy.



SUPERVISION

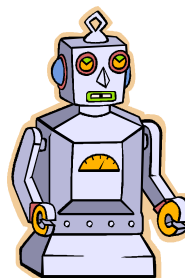
Children are supervised at school by teachers from 8:30am to 2:30pm every day. Children are not officially supervised prior to 8:30am or after 2:30pm. With this in mind it is requested that children not be dropped at school early in the morning and that arrangements are made to have your children collected or travel home directly after the conclusion of the school day.

SWIMMING

As part of this school's physical education program, swimming lessons are offered to students. Our school's Physical Education and Classroom Teachers conduct swimming lessons at the local pool. Students travel by bus to and from the lessons. Letters explaining the swimming block will be sent home closer to the date.

TOYS

Toys may be brought to school for Show and Tell purposes only (toys should be given to the teacher or be



returned to child's port immediately and remain the responsibility of the child). Toys should not be taken to the playground. The school does not take any responsibility for the toys or damage of any toys brought to school.

TRANSFERS

If your child will be leaving our school please contact the office. Parents will be required to come up to the school to obtain a Transfer Certificate. This is not required when children move from Year Seven to High School at the end of the school year.

VIRTUAL FUTURES CENTRE OF EXCELLENCE

VIRTUAL FUTURES CENTRE OF EXCELLENCE

The innovative Virtual Futures Centre of Excellence (V.F.C) creates a positive change within Healy State School and the greater school district. The use of Videoconferencing provides many opportunities to support professional and curriculum-based activities. The following describes the creative and innovative uses of videoconferencing for teachers and students at Healy State School.

- Students enrolled in teacher education courses can observe and critique innovative teaching practices in school classrooms and later discuss them.
- Teachers can mentor new teachers who may have limited peer support groups within their own school districts.

- Interviews, meetings, presenting at conferences, and other administrative tasks are performed via video link
- Students can communicate with video pen pals to experience diverse cultures and ways of life, both economic and ethnic. Video pals also provide an excellent opportunity for foreign language practice.
- Schools known for outstanding programs or projects model those projects for other schools.
- Curriculum initiatives between schools - - debates, spelling bees, or research conferences -- take place via two-way video links.
- Videoconferencing facilities encourage cooperative learning, where groups at distant sites take on a learning task and teach remote peers.

VISITORS

As a part of our Protective Behaviours, we now require all visitors to the school to come into the office to register. Parents helping with classroom activities, tuck-shop volunteers and maintenance personnel are to come into the office to sign in.

We hope you enjoy your time with us at Healy State School and help us provide quality education by developing quality partnerships between home and school.

